

SUSTAINABLE
HOUSING



Envirohaven
SUSTAINABLE HOUSING SOLUTIONS



SOLUTIONS



Our premier product, the **Haven series**, is the first complete home designed specifically for affordable self-sustained living, comfort, and maximum energy efficiency. Customized floor plans and site-specific options are available for all customers.

HAVEN PACKAGES INCLUDE

- Site-specific engineered plans including site plan, floor plans and elevations, foundation and framing plans, electrical plan, etc. Plans are guaranteed for local building department approval
- Partially assembled wall sections and complete hardware package Interior wall framing
- Dual pane, low-e energy-efficient windows
- Solid core exterior doors
- Pre-cut standing seam metal roofing for long lasting durability
- Exterior siding that will provide a fire and weather resistant coating with insulative properties
- Rough electrical
- Detailed construction manuals, videos, and remote electronic assistance are available for owner-builders as well as licensed general contractors desiring to purchase unfinished packages

OPTIONAL ENERGY HARVESTING SYSTEMS

- Solar PV and Solar Thermal equipment
- Radiant baseboard or floor heating systems
- Wood burning or pellet fireplace or alternate heat source
- Grey Water Recycling System
- All renewable energy systems can be applied. Call for details.

• *Budgets for completely finished packages available*

PACKAGE CONSTRUCTION ON-SITE

Our goal is to positively impact the communities where our homes are being built. Although we are able to take your project from start to finish, we encourage the use of local contractors and vendors for site work, assembly, and finished interiors. This ensures the funds from your project stay in your community to create jobs and spur economic development.

Envirohaven is able to locate, train and certify builders in your area to assist with the construction and any maintenance related needs associated with your project. Site support, detailed construction manuals, videos, and remote assembly assistance are provided for all *Envirohaven* customers in the United States for no additional fees. System monitoring and service packages are available upon request.

ADAPTABLE

The fully adaptable 1550 sq. ft. design can be customized to suit site-specific needs. A wide range of options include:

- Flexible and spacious office configurations
- Open lodge with commercial kitchen and common areas
- 3 bdrm–2 bath residential model
- 4 bdrm–3 bath dormitory with kitchenette accommodating up to 8 individuals

DURABLE

Our structures are engineered for the harshest environmental conditions making them ideal for remote locations.

- High R-value foam insulation in walls and roof create comfortable living environments in extreme hot and cold climates
- 7.5" thick exterior walls use a modified structural insulated panel system
- Standing seam metal roofing for long lasting durability
- Great for earthquake prone areas. Seismic: SDC D
- Built to withstand heavy snow loads of 142 psf (ground snow load)
- Rated for 100+ mph winds

PORTABLE

Our portable units provide the same durable and cost effective features as permanent structures.

Consider these benefits:

- Temporary office and lodging
- Factory built panels are assembled and weather tight on-site in minimal time
- Can be disassembled and built in an alternate location
- Minimal reconstruction costs

SUSTAINABLE

Benefit from greater sustainability with less material and energy consumption during initial construction and throughout the life of the home.

- 30% less framing materials than conventional rectangular structures
- Designed for low surface-to-air ratio to minimize heat loss
- Innovative design requires smaller energy harvesting systems
- Customized for site-specific requirements to use a combination of any renewable and non-renewable energy generation
- Designed for high R-values in the walls and roof
- Reduced maintenance and replacement costs over the lifetime of the structure
- Designed for minimal waste during construction process and almost zero on-site waste

COST EFFECTIVE

The *Haven* design is highly cost competitive while possessing superior quality compared to other sustainable homes on the market.

- Lighter and fewer materials translates to lower overall cost
- Weather tight on-site in minimal time reducing necessary construction man hours
- More comfortable work and living conditions reduces employee turnover and helps attract higher quality personnel
- Renewable energy reduces fossil fuel and system maintenance related costs
- Great for areas where labor is in high demand and affordable housing is in short supply

“

I see *Envirohaven* being revolutionary for the sustainable housing market. Finally, a company is providing an affordable way for people with any kind of budget to live an eco-friendly lifestyle and to not be dependent on public utilities to power their homes. *Envirohaven* will change the way people think about building in rural and remote locations.

— DAVE ARCHER, *President and CEO of Nevada Center for Entrepreneurship and Technology (NCET)*

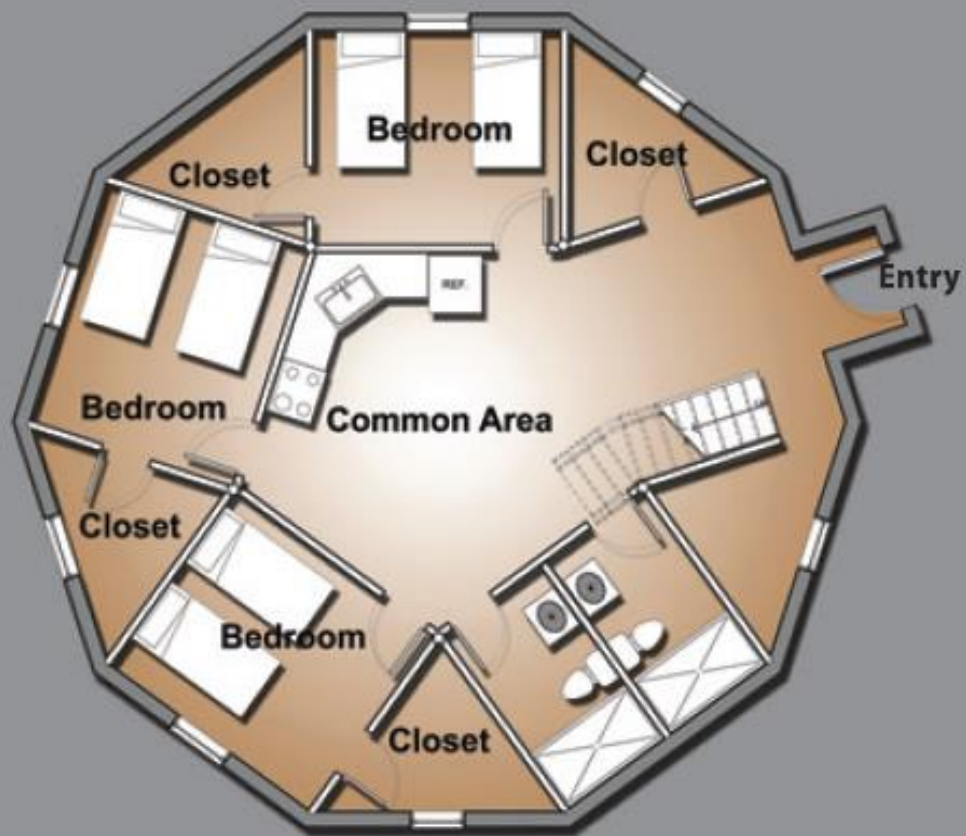
”

4 Bdrm
3 Bath Model



Upper Floor

Living Area – 443 sf.



Main Floor

Living Area – 1107 sf.

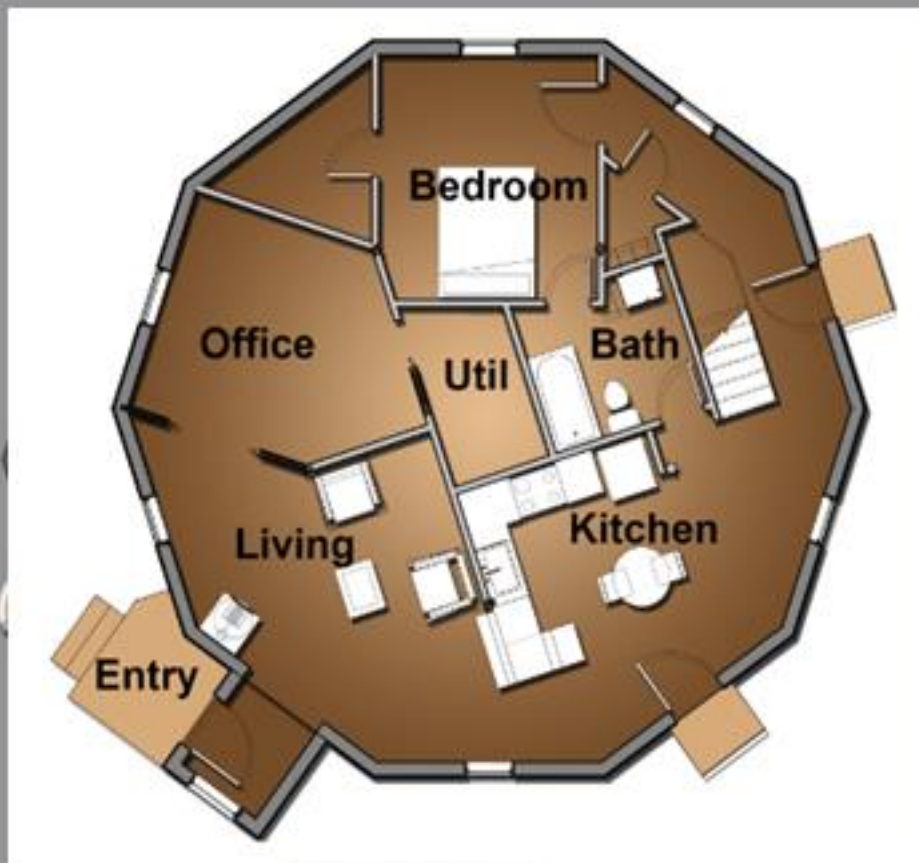
TOTAL LIVING AREA – 1550 SF.

3 Bdrm
2 Bath Model



Upper Floor

Living Area – 443 sf.



Main Floor

Living Area – 1107 sf.

TOTAL LIVING AREA – 1550 SF.



ABOUT FRAME ARCHITECTURE, INC.



JEFF FRAME, AIA

DISTINCTIVE

A graduate of the University of Nevada with a Master's from University of Utah, School of Architecture, Jeff Frame leads a team that mirrors his own strengths and passions for site-specific design, project oversight, and environmental concerns.

REAL

Architecture crafted to individual client needs and dreams.

INSPIRED

Reflecting the excitement of both breadth and insight. Spanning designs for hospitality, residences, universities, offices and retail. From historic renovations to ultra-modern concepts, Frame Architecture takes a team approach.

Licensed in the States of Nevada, Colorado and Hawaii.

WE'RE WITH YOU EVERY STEP OF THE WAY.

Envirohaven is a manufacturing company that produces complete home packages to be assembled by others.

When constructing our home packages, we highly recommend using licensed contractors, plumbers and electricians. Contractor inquiries are welcome. In the areas our homes are built, we seek to encourage

economic development by supporting local contractors, tradesmen and vendors.

Site support, detailed construction manuals, videos, and remote electronic assembly assistance are provided for all *Envirohaven* customers in the Western United States for no additional fees.

A variety of options are available through Envirohaven to ensure that your new home meets all of your budgetary, environmental, and living requirements.

HAVEN HOME OPTIONS:

- Basic Package Only
- Basic Package Assembled, by a licensed general contractor in your area
- Turn-Key Home; complete with all interior materials and finishes. Design assistance available. Assembled by a licensed general contractor in your area.

ADDITIONAL SERVICES INCLUDE:

- Training programs for homeowners and contractors at our Reno Facility or on site.
 - Customized home design & floor plans
 - Building site optimization consultation
 - Site Contractor support
 - System monitoring and service packages
-

OUR PROMISE

Envirohaven offers a 10-year limited warranty for factory parts and labor. We support all manufacturers' warranties on all LIFE SYSTEM products. We exceed client expectations with regard to their service needs and overall experience.



The innovation of *Envirohaven* captures my imagination. Both as a citizen and former economic development professional, I can see so many opportunities. Not only is there a new livability and energy option, but just the concept stirs new and creative ideas that will seed and feed other innovators!



— CHUCK ALVEY, CEcD, *Vistage International* — Chair
Former head of Economic Development Authority of Western Nevada (EDAWN)

THE ENVIROHAVEN STORY



General Contractor Greg Bischoff has been researching, designing, and building energy-efficient custom homes since 1978. The *Haven* design was Greg's vision for addressing a growing need for simple, cost-effective and energy-efficient homes specific to the needs of living without access to public utilities or, "off-grid housing."

The *Haven* patent pending design transforms the challenge of off-grid home construction into a reality. Our 1550 square foot home package, including all energy harvesting equipment, is easily assembled anywhere and can cost under \$75 per square foot plus site costs. While able to withstand the harshest environmental conditions, our design uses over 30% less building materials

than current conventional and pre-fab homes resulting in a more sustainable design and lower overall costs.

Envirohaven solves extremely complex problems for people who live in remote areas. Never before have so many energy-saving and sustainable features been combined in one home design that is strong and durable, simple to construct, yet still affordable.

Generous support from the Nevada Center for Entrepreneurship and Technology (NCET), University of Nevada Reno (UNR), SCORE, as well as the Greater Reno-Tahoe Construction Industry, have greatly assisted us in making Envirohaven a success.

INTEGRATED SUSTAINABILITY

Envirohaven is revolutionizing the remote housing industry with our panelized home package that contains all mechanical elements necessary for living without the need to access public utilities. Our patent pending design minimizes the size of any energy generation system used by maximizing energy efficiency. Our homes are cost effective and simple to construct, while at the same time they provide a comfortable and spacious 21st century lifestyle.

“The novel *Envirohaven* home has the best utilization of internal space that I have ever seen. The design itself also creates high energy efficiency because of the low external surface area.”

— DR. ROGER L. JACOBSON,
Desert Research Institute (DRI)
Renewable Energy Center

MISSION STATEMENT

Continually strive to integrate sustainable building technologies and renewable energy in adaptive ways to make the prospect of living independent of public utilities obtainable and desirable.





FEATURED IN:

NEVADA Today



northern nevada
Business Weekly
nbnw.biz

WINNERS OF:



DONALD W. REYNOLDS
GOVERNOR'S CUP
BUSINESS PLAN COMPETITION
PRESENTED BY **NCET**



DONALD W. REYNOLDS
LT. GOVERNOR'S AWARD
CLEAN TECH COMPANY

CONTACT US

2500 Valley Road | Suite F | Reno, NV 89512

Phone : 775-324-2836

Email : info@envirohaven.com | Website : envirohaven.com

© 2013 Envirohaven-Bischoff/Patent Pending

