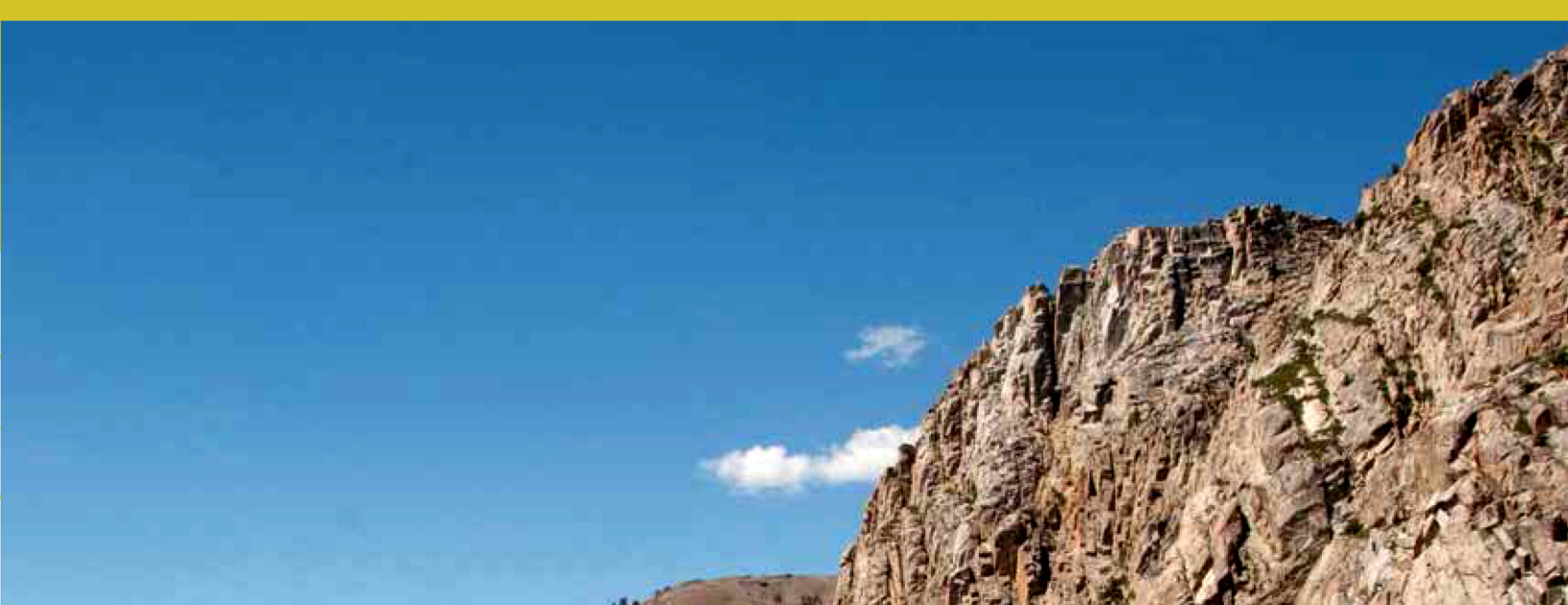


SUSTAINABLE  
HOUSING



Envirohaven<sup>TM</sup>  
SUSTAINABLE HOUSING SOLUTIONS



SOLUTIONS



## HYPER-EFFICIENT

Our patented Haven® design offers sustainable benefits during the construction process and continues for generations to come.

- 30% less structural materials than conventional rectangular structures
- Designed for low surface-to-air ratio to minimize heat loss
- Innovative design requires smaller energy harvesting systems
- Customized for site-specific requirements to use a combination of any renewable and non-renewable energy generation
- High R-values in the walls and roof create an ideal home for extreme hot and cold climates
- Centralized C.O.R.E.™ (Central Orientation of Required mechanical Equipment) and aerodynamic design greatly reduces plumbing and HVAC system

## DURABLE

Our design is engineered for the harshest environmental conditions and is specific to each individual building site, making the Haven® an ideal choice for remote locations.

- Haven® homes will meet or exceed current International Building Code (IBC) standards
- 8" thick exterior walls use a modified structural insulated panel system
- Long-lasting galvalume corrugated metal roofing
- Great for earthquake prone areas. Seismic: SDCCD
- Built to withstand heavy snow loads of 142 psf (ground snow load)
- Rated for 100+ MPH sustained winds



## ADAPTABLE

The fully adaptable 1550 sq. ft. design can be customized to suit site-specific needs.

A wide range of options include:

- 1 bedroom - 1 or 2 bath
- 2 bedroom - 2 bath
- 3 bedroom - 2 bath
- 4 bedroom - 3 bath dormitory with kitchenette accommodating up to 8 individuals
- Open lodge with commercial kitchen and common areas
- Flexible and spacious living/commercial configurations

## AFFORDABLE

The Haven® design is highly cost competitive, yet possesses superior quality when compared with other sustainable homes on the market today.

- Lighter and fewer materials translate to lower overall cost
- Weathertight on-site in minimal time; reducing necessary construction man hours
- Renewable energy reduces fossil fuel and system maintenance related costs

When used for remote workforce housing:

- More comfortable work and living conditions reduce employee turnover and help to attract more highly skilled personnel
- Ideal for areas where labor is in high demand and affordable housing is in short supply

“

I see *Envirohaven*™ being revolutionary for the sustainable housing market. Finally, a company is providing an affordable way for people with any kind of budget to live an eco-friendly lifestyle and to not be dependent on public utilities to power their homes. *Envirohaven*™ will change the way people think about building in rural and remote locations.

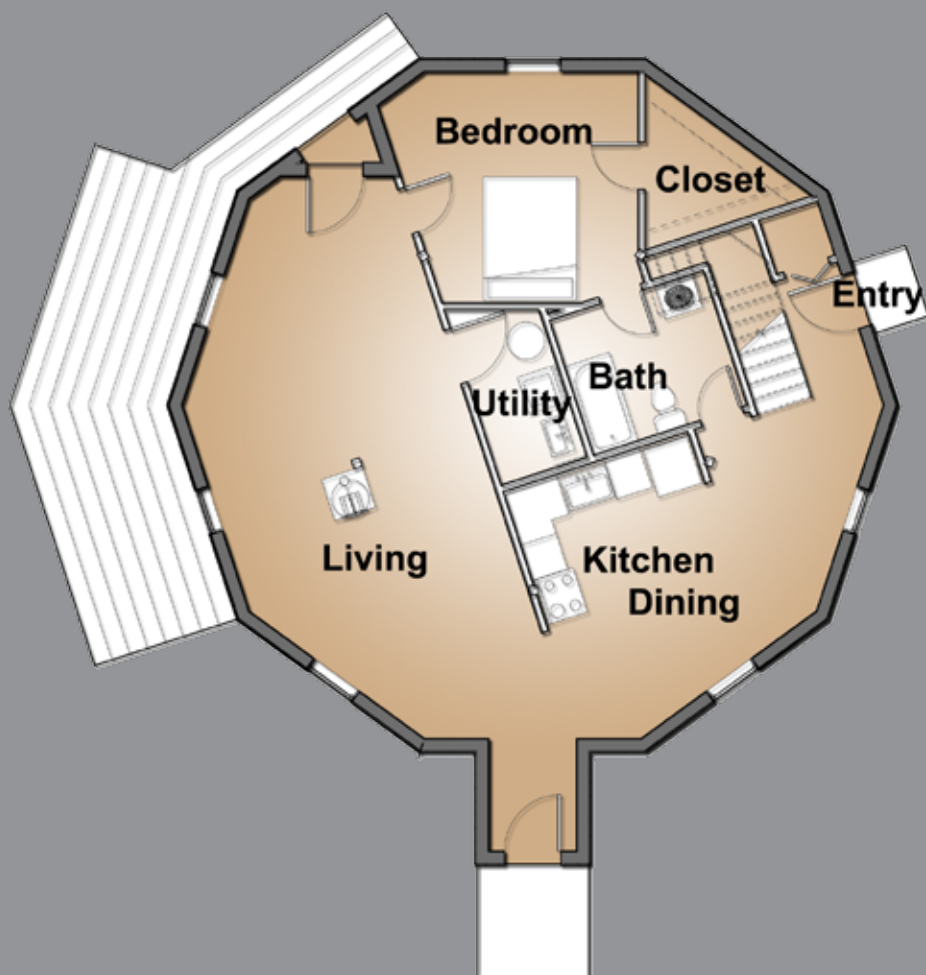
— DAVE ARCHER, *President and CEO of Nevada Center for Entrepreneurship and Technology (NCET)*

”

2 Bedroom  
2 Bath Model

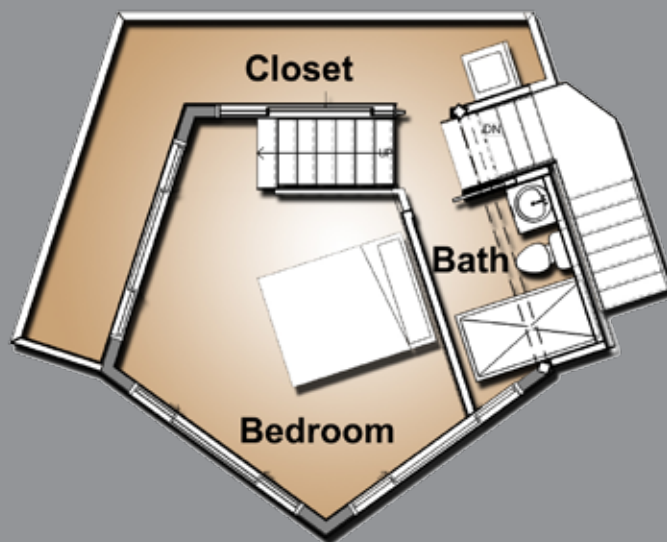


## Upper Floor

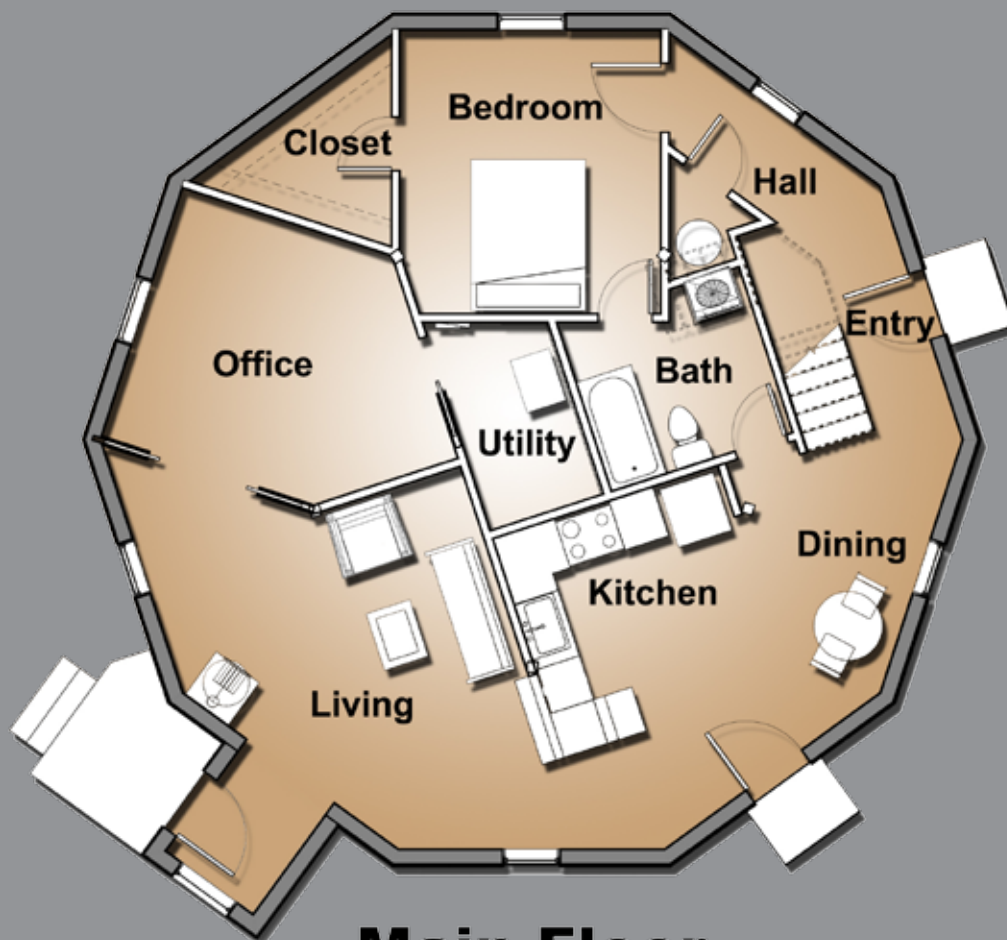


## Main Floor

3 Bedroom  
2 Bath Model

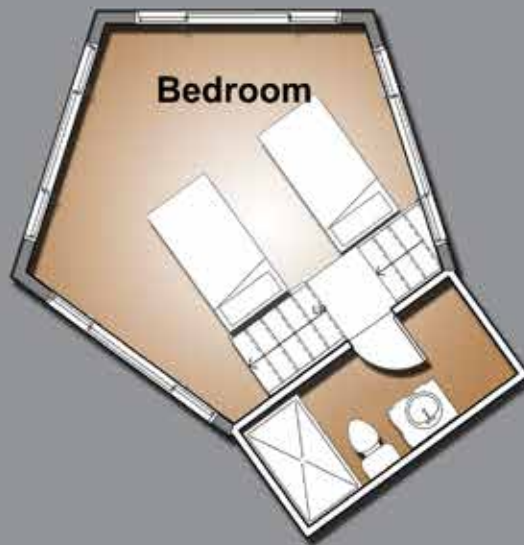


## Upper Floor

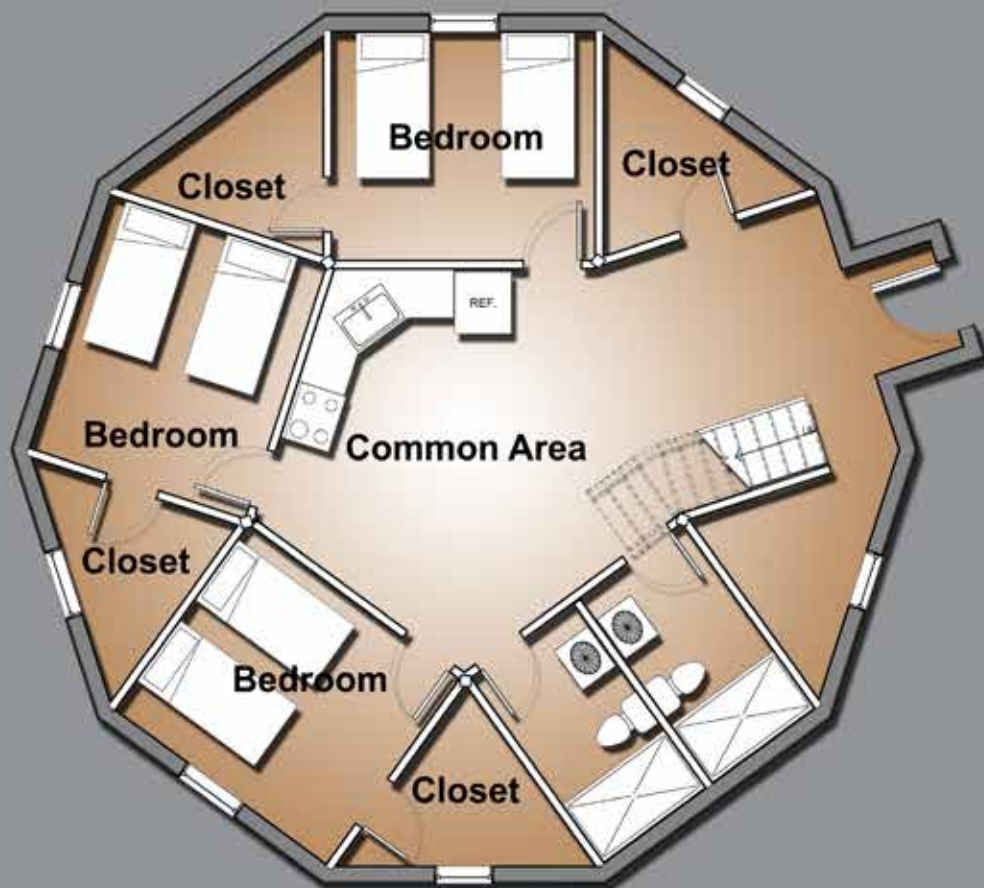


## Main Floor

4 Bedroom  
3 Bath Model



## Upper Floor



## Main Floor

*The Haven®, is the first complete home designed specifically for affordable self-sustained living, comfort, and maximum energy efficiency. Customized floor plans and site-specific options are available for all customers.*

## BASIC HAVEN® PACKAGE INCLUDES

- A complete set of engineered building plans, customized to your needs and specific home location. Plans include: site, foundation, floor, elevation, framing, and electrical plans. Plans are guaranteed for local building department approval
- 40 wall and roof panels with exterior sheeting, 5 support posts, and all horizontal beams needed
- 8" thick exterior walls
- Complete lumber list for all additional lumber needed for interior framing
- Complete hardware package for structure assembly
- Insulation: 2" of closed cell foam factory installed in wall panels and 3" applied in ceiling panels. Rolls of batting insulation to be supplied by homeowner. The total R value will provide approximately R35 in the walls and R42 in the ceiling
- One coating of waterproof protection applied to wall sheeting material
- All materials needed for waterproofing and superior air impermeability
- 9 dual pane, insulative (honeycomb frame), low-e energy efficient windows with superior strength
- 2 solid core fiberglass exterior doors
- Pre-cut galvalume corrugated metal roofing with waterproof underlay
- Green and water soluble materials for easily applied, resilient alternative to stucco siding
- Detailed construction manual, video, and remote electronic assistance
- Customized floor plans and site-specific options available
- Phone/video chat technical support during package construction time

\* For more information, please contact us: [www.envirohaven.com](http://www.envirohaven.com) - Phone (775) 324-2836

## PACKAGE CONSTRUCTION ON-SITE

Our goal is to positively impact the communities where our homes are built. Envirohaven™ is able to locate, train, and certify builders in your area to assist with the construction and maintenance of your home. Our affiliated builders are able to work with you to build your project locally from start to finish, or anywhere in between. We seek collaboration with builders and vendors in your area to help ensure that, to a large degree, the funds from your project stay in your community to create jobs and spur economic development.



# WE'RE WITH YOU EVERY STEP OF THE WAY

---

Envirohaven™ is a full service project management firm that provides all of the resources to build our patented Haven® design from start to finish.

Site support, detailed construction manuals, videos, and remote electronic assembly assistance are available for all Envirohaven™ customers and contractors.

When constructing the Haven®, we highly recommend using licensed local contractors, plumbers, and electricians. The Envirohaven™ Team can assist you in locating and working with contractors in your area.

Envirohaven™ is continuing to expand our Certified Builder Network. If you are a sustainability-minded contractor, we would like to speak with you about joining our team.

---

**A variety of options are available through Envirohaven™ to ensure that your new home meets all of your budgetary, environmental, and living requirements.**

## **HAVEN® HOME OPTIONS:**

- Basic Package Only
- Basic Package Assembled, by a licensed general contractor in your area
- Turn-Key Home, complete with all interior materials and finishes. Design assistance available. Assembled by a licensed general contractor in your area.

## **ADDITIONAL SERVICES INCLUDE:**

- Training programs for homeowners & contractors at our Sparks Facility or on-site.
  - Customized home design & floor plans
  - Building site optimization consultation
  - Contractor site support
- 

## OUR PROMISE

*Envirohaven™ requires all product produced under our patent license agree to meet a 10 year limited warranty on constructed parts and labor. We support all manufacturers' warranties on package inclusion products. Envirohaven™ and our affiliates will exceed client expectations with regard to service needs and overall experience.*



The innovation of *Envirohaven™* captures my imagination. Both as a citizen and former economic development professional, I can see so many opportunities. Not only is there a new livability and energy option, but just the concept stirs new and creative ideas that will seed and feed other innovators!



– **CHUCK ALVEY, CEO, *Vistage International*** – Chair  
*Former head of Economic Development Authority of Western Nevada (EDAWN)*

## INTEGRATED SUSTAINABILITY

Our patented design solves many of the challenges and unsustainable aspects of other housing styles (conventional, geodesic domes yurts, and building container housing). It is easy to construct, affordable, incredibly durable, and extremely energy efficient, making this high-quality and sustainable home accessible to more people in more places.

The Haven® inherently provides more for less, facilitating a truly sustainable lifestyle. The Haven® exemplifies three key areas of sustainable design:

### Minimal Materials

- Design lends itself to an almost waste-free panel production process
- 30% less material s needed to create a 1550 sq. ft. home (material used equivalent to a 1050 sq. ft. home)
- Roof area is less than 1/3 that of a typical 1550 sq. ft. home and made of the most long lasting and durable material available
- Centralized C.O.R.E.™, short utility, plumbing, and duct runs
- Innovative, high-quality materials that do more for less

### Energy Efficiency

- Low surface-to-air ratio
- Minimal thermal bridging
- Circular ventilation
- 8" thick exterior walls allowing for standard package R-values in excess of R35, ceiling in excess of R42
- High-efficiency, low-e windows included in standard package
- Moisture- and air-tight shell
- Easily outfitted with photovoltaic panels, solar water heater, grey water recycling, composting toilets, rain collection system, geothermal or ground air exchangers, green house

### Use of Space

- No attic space needed
- Mechanical equipment is located in the least optimal living area
- Design creates almost perpendicular exterior walls, minimizing loss of headroom in all measurable area with perpendicular windows and doors
- Utilizes all interior perimeter space and can be decorated with standard furnishings
- ½ story master bathroom utilizes space typically wasted in geodesic dome structures
- Non-optimal living area is fully utilized by creating an abundance of usable storage space
- Minimal wasted space for hallways



# THE ENVIROHAVEN STORY



General Building Contractor Greg Bischoff has been designing and building energy-efficient and innovative custom homes since 1978. The Haven® design was Greg's vision for addressing a growing need for simple, cost-effective, and energy-efficient homes by using less renewable and non-renewable resources "cradle to grave".

Always supportive of the geodesic dome ideal, as a builder, Greg fully understands the pitfalls and strove to improve on Buckminster Fuller's ideal. The Haven® has only 40 panels of approximately 2 different sizes. Geodesic homes of a similar size have upwards of 120 triangles of multiple sizes. The inherent strength and low surface-to-outside-air ratio of the geodesic dome is maintained with the Haven® design. Efficient use of interior finish materials, such as drywall, was considered in the design process. Exterior walls were created to be only a few degrees off perpendicular. The large, central, pentagonal upper-level was added. The interior C.O.R.E.™ (Central Orientation of Required mechanical Equipment) places all of the home mechanical functions (plumbing, electrical, heating, and duct systems) at the literal center of the home, reducing materials used and resulting in more cost-effective, long-term maintenance. Conventional and solar thermal hot water systems have very short runs to reach all required usage outlets. These improvements to the geodesic dome design make the Haven® a truly unique and sustainable home.

Incorporated in June 2012, the Envirohaven™ Team of Vicki Bischof, Greg Bischof, and Clint Borchard began the work necessary to build a successful company by

collaborating with structural engineers and architects, receiving approval from building departments, and obtaining funding sources by lenders. Today, that work has come to fruition. Haven® homes are embraced by all of these professions and entities.

October 2014, the United States Federal Patent Office verified that the Haven® design had never been realized by any other designer or builder. Utility Patent #8,863,447B2 was issued.

While the Haven® patented design performs the same functions on- or off-grid, the concept is transformational for remote home building where labor and materials on-site are not as readily available and extreme environmental conditions take a toll on any type of shelter. Never before have so many energy-saving and sustainable features been combined in one home design that is so strong, durable, and simple to construct. The design and combination of materials reduced the need for replacement and repair materials as well as non-renewable energy supplements (i.e. diesel, gas, or propane generators) to be hauled to remote areas.

Generous support from the Nevada Center for Entrepreneurship and Technology (NCET), University of Nevada Reno (UNR), SCORE, as well as the Greater Reno-Tahoe Construction Industry, have greatly assisted in making Envirohaven™ a success.

**Envirohaven's™ mission is "striving to make sustainable living both desirable and obtainable to more people in more places."**





**Envirohaven**<sup>TM</sup>  
SUSTAINABLE HOUSING SOLUTIONS



## FEATURED IN:

**NEVADA**Today

northern nevada  
**BusinessWeekly**  
nnbw.biz



## WINNERS OF:



**DONALD W. REYNOLDS  
GOVERNOR'S CUP**  
BUSINESS PLAN COMPETITION  
PRESENTED BY **NCET**



**DONALD W. REYNOLDS  
LT. GOVERNOR'S AWARD**  
CLEAN TECH COMPANY

## CONTACT US

395 Freeport Blvd, Suite 1 | Sparks, NV 89431

Model Home and Office Hours By Appointment

Phone : 775-324-2836

Email: [Info@Envirohaven.com](mailto:Info@Envirohaven.com) | Website: [Envirohaven.com](http://Envirohaven.com)